

Agriculture tractors

BM-VOLVO

800 – 810 – 814



Pull ahead now with the BIG BM-VOLVO power line. One of the most powerful tractor lines on the market. Built strong for hard-pull farming with big implements for maximum production. The line which cuts your costs and increases your profit.



BM-VOLVO 800

106 hp

The 800 has already proved its ability. In realistic tests under various operating conditions (OECD-test No. 241) this model has shown its capacity and low operating costs — no farmer can afford to overlook it.

A 6-cyl. direct-injection diesel engine — 106 hp — has torque reserve for quick response to hard spots under steady pulling. A well-matched transmission — 8 forward and 2 reverse speeds — with exceptionally strong final gears, rear axles, differential and diff. lock. Fully independent and ground-speed PTO.

BM-VOLVO Terra-Trol three-point lift with 2.3 tons lifting capacity. Long wheel base for fine weight distribution and smooth ride.



BM-VOLVO 810

133 hp turbo

BM-VOLVO 810 — one of the most powerful standard tractors on the market — equipped with a Volvo turbo diesel engine, built for turbo from the start.

A tractor with all the features of the 800 series and extra power for speedier work with big implements. Big tyres — 18.4—38 rear and 11.00—16 front — provide good traction and floatation.

Single or dual independent and ground-speed PTO for 1,000 r. p. m. or 540/1,000 r. p. m. mean complete powering flexibility. Drawbar designed for steady pull and easy setting.

The 810 is built with turbo for go all the way. Outstanding economy in relation to work done.



BM-VOLVO

814

133 hp turbo — 4-wheel drive

BM-VOLVO 814 — the right tractor when conditions are muddy, slick or loose. Same engine as on the 810 provides the power and the 814 has the float traction to reduce soil compaction and increase drawbar pull.

Hydrostatic steering, front fenders and dual PTO — independent and ground-speed dependent — with PTO shafts for 540 and 1,000 r. p. m. The 814 is built for the big farms who want a dependable tractor to utilize big implements even under severe conditions.

BM-VOLVO 810-814

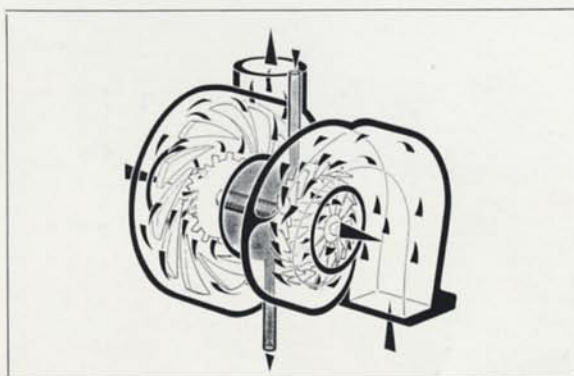
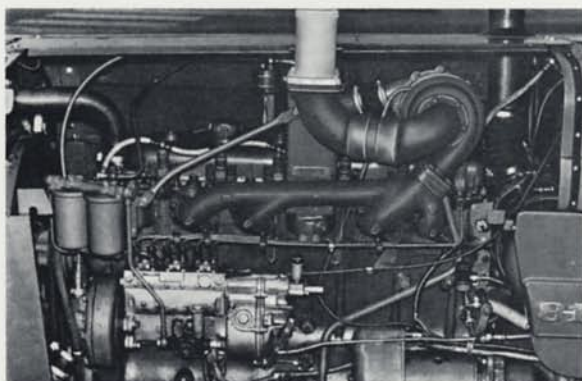
with turbo

Turbo engine TD 50 A
High output — 133 hp

BM-VOLVO 810 and BM-VOLVO 814 are equipped with VOLVO 6-cyl. TD 50 A diesel engines — with turbo.

The Volvo turbo is an exhaust-driven compressor which provides the engine with extra air. This

means that more fuel can be burned with a greater air surplus and the result is both increased output and very clean exhaust gases. At the same time the combustion is more effective and this, in practice, results in low fuel consumption.



BM-VOLVO 814

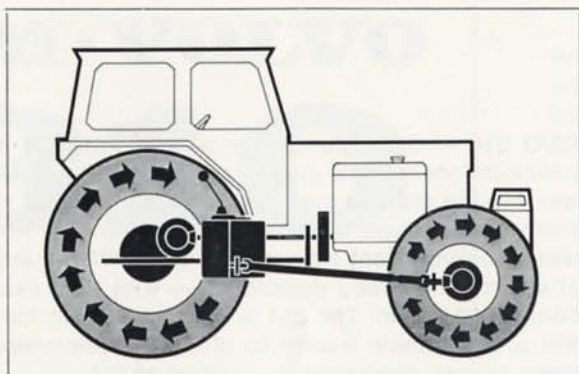
— 4-wheel drive for float traction

Power transfer to four wheels means utilization of full engine power, saves tyres, reduces soil compaction and enables sure farming under severe conditions.

The 4-wheel drive transmission is well proven and built from the start for high drawbar pull. The

front-wheel drive works in the low range and can easily be disconnected.

The big front tyres — 14.9—24 — add float traction and the hydrostatic steering makes it easy to manoeuvre.



SPECIFICATIONS

T 800

Engine

Volvo D50A 6-cyl., direct-injection diesel engine
Displacement 313 in³ (5.13 litres)
Compression ratio 17:1
Output at 2,300 r.p.m. 106 hp SAE
Max. torque at 1,600 r.p.m. 260 ft.-lb. (36 kpm SAE)
Fuel tank capacity 33 Imp.gal (150 litres)

Electrics

Voltage 12 V
Battery capacity 160 Ah
Alternator 450 W
Starter 4 hp

Clutch

Single dry-plate clutch
Clutch brake

Gearbox

Gear	standard p.t.o. speed 1,650/2,050 engine r.p.m.		max. engine speed (2,300 r.p.m.)	
	mph	kph	mph	kph
1 (I L)	1.1/1.3	1.7/2.1	1.5	2.4
2 (II L)	1.6/2.0	2.6/3.2	2.2	3.6
3 (III L)	2.4/3.0	3.9/4.8	3.4	5.4
4 (IV L)	3.1/3.9	5.0/6.2	4.4	7.0
5 (I H)	4.2/5.3	6.8/8.5	5.9	9.5
6 (II H)	6.4/8.0	10.3/12.8	8.9	14.4
7 (III H)	9.6/11.9	15.4/19.2	13.4	21.5
8 (IV H)	12.5/15.6	20.2/25.0	17.5	28.1
R1 (R L)	1.2/1.6	2.1/2.5	1.8	2.9
R2 (R H)	5.2/6.4	8.3/10.3	7.2	11.6

Differential lock, locking the rear axle half-shafts

Brakes

Disc brakes on differential shafts

Steering

Hydraulic power steering

Power take-offs

Independent and ground speed p.t.o. Both lever controlled via a multi-plate clutch. The tractor is supplied with a PTO providing 540 r.p.m. at 1,650 engine r.p.m. or with a p.t.o. providing 540/1,000 r.p.m. (2 shafts) at 2,050 engine r.p.m.

Hydraulics

Terra-Trol hydraulic system with combined position and draft control or the latter only
Draft control via the lower links
Lift 5,200 lb (2,360 kg)
Oil pressure 2,275 lb/in² (160 kp/cm²)
Pump capacity 6.6 Imp.gal/min (30 litres/min)

Tyres

Front 7.50-18/8
Rear 18.4/15-34/6

Dimensions and weight

Wheel base	106 in (2,690 mm)
Track, front	56/73 in (1,425/1,860 mm)
Track, rear	66/89 in (1,666/2,266 mm)
Turning radius	15 ft 1 in (4.6 m)
Length	156 in (3,960 mm)
Width	84 in (2,140 mm)
Height with guard frame	101.2 in (2,570 mm)
Weight with hydr. lift and guard frame	9,900 lb (4,490 kg)
Weight distribution front/rear	2,668/7,231 lb (1,210/3,280 kg)

Standard equipment includes:

Front towing hook
Spotlights, 2 forwards 1 to the rear
Electrical plug for trailer
Blinkers front and rear
Horn
Spark arrester
Cold-starting device
Telescopic lift links

Optional equipment includes:

Ballast weights
Different combination of single-action and double-action control valves for remote control
Guard frame with supplemental cab kit
Automatic hitch
Lifting/towing hook
Remote-control hydraulic cylinder
Extra hydraulic oil tank
Hydraulic pump, 10 Imp. gal/min (45 litres/min)
Safety cab with heater

T 810

Engine

Volvo TD 50 A 6-cyl., direct-injection diesel engine with turbo-charger
Displacement 313 in³ (5.13 litres)
Compression ratio 17:1
Output at 2,300 r.p.m. 133 hp SAE
Max. torque at 1,650 r.p.m. 318 ft.-lb. (44 kpm SAE)
Fuel tank capacity 33 Imp.gal (150 litres)

Electrics

Voltage 12 V
Battery capacity 160 Ah
Alternator 450 W
Starter 4 hp

Clutch

Single dry-plate clutch with sintered lining
Clutch brake

Gearbox

Gear	standard p.t.o. speed 2,050 engine r.p.m.		max. engine speed (2,300 r.p.m.)	
	mph	kph	mph	kph
1 (I L)	1.4	2.3	1.6	2.6
2 (II L)	2.2	3.5	2.4	3.9
3 (III L)	3.2	5.2	3.6	5.8
4 (IV L)	4.2	6.8	4.7	7.6
5 (I H)	5.7	9.2	6.4	10.3
6 (II H)	8.6	13.8	9.6	15.5
7 (III H)	12.8	20.7	14.4	23.2
8 (IV H)	16.8	27.1	18.9	30.4
R1 (R L)	1.7	2.8	1.9	3.1
R2 (R H)	6.9	11.1	7.8	12.5

Differential lock, locking the rear axle half-shafts

Brakes

Disc brakes on differential shafts

Steering

Hydraulic power steering

Power take-offs

Independent and ground speed p.t.o. Both lever controlled via a multi-plate clutch. The tractor is supplied with a PTO providing 1,000 r.p.m. at 2,050 engine r.p.m. or with a p.t.o. providing 540/1,000 r.p.m. (2 shafts) at 2,050 engine r.p.m.

Hydraulics

Terra-Trol hydraulic system with combined position and draft control or the latter only
Draft control via the lower links
Lift 5,200 lb (2,360 kg)
Oil pressure 2,275 lb/in² (160 kp/cm²)
Pump capacity 6.6 Imp.gal/min (30 litres/min)

Tyres

Front 11.00-16/8
Rear 18.4/15-38/6

Dimensions and weight

Wheel base	106 in (2,690 mm)
Track, front	67 in (1,700 mm)
Track, rear	63/71 in (1,600/1,800 mm)
Turning radius	16 ft 5 in (5 metres)
Length	167 in (4,240 mm)
Width	82 in (2,080 mm)
Height with cab	102 in (2,600 mm)
Weight with hydr. lift, cab and ballast internal rear weights	11,800 lb (5,360 kg)
Weight distribution front/rear	2,880/8,920 lb (1,300/4,060 kg)

Standard equipment includes:

Internal ballast weights at rear wheels
One single-action and one double-action control valve for external hydraulic equipment
Extra hydraulic oil tank
Telescopic lift links

Optional equipment includes:

External ballast weights at rear wheels
Front-mounted ballast weights
Automatic hitch
Safety cab with heater
Lifting/towing hook
Remote-control hydraulic cylinder
Auxiliary cylinder increasing the lift of the hydraulic system to 6,170 lb (2,800 kp)
Hydraulic pump, 10 Imp.gal/min (45 litres/min)

T 814

Engine

Volvo TD 50 A 6-cyl., direct-injection diesel engine with turbo-charger
Displacement 313 in³ (5.13 litres)
Compression ratio 17:1
Output at 2,300 r.p.m. 133 hp SAE
Max. torque at 1,650 r.p.m. 318 ft.-lb. (44 kpm SAE)
Fuel tank capacity 33 Imp.gal (150 litres)

Electrics

Voltage 12 V
Battery capacity 160 Ah
Alternator 450 W
Starter 4 hp

Clutch

Single dry-plate clutch with sintered lining
Clutch brake

Gearbox

Gear	standard p.t.o. speed 2,050 engine r.p.m.		max. engine speed (2,300 r.p.m.)	
	mph	kph	mph	kph
1 (I L)	1.8	2.9	2.0	3.2
2 (II L)	2.7	4.3	3.0	4.8
3 (III L)	4.0	6.4	4.5	7.2
4 (IV L)	5.2	8.4	5.9	9.5
5 (I H)	5.7	9.2	6.4	10.3
6 (II H)	8.6	13.8	9.6	15.5
7 (III H)	12.8	20.7	14.4	23.2
8 (IV H)	16.8	27.1	18.9	30.4
R1 (R L)	2.2	3.5	2.4	3.9
R2 (R H)	6.9	11.1	7.8	12.5

Differential lock, locking the rear axle half-shafts
Four-wheel drive in the low range

Brakes

Disc brakes on differential shafts

Steering

Hydrostatic power steering

Power take-offs

Fully independent and ground speed, with dual PTO shafts as standard for 540 and 1,000 r.p.m. The independent PTO runs at 540/1,000 r.p.m. at an engine speed of 2,050 r.p.m. Both are lever controlled via a separate multi-plate clutch

Hydraulics

Terra-Trol hydraulic system with combined position and draft control or the latter only
Draft control via the bottom links
Lift 5,200 lb (2,360 kg)
Oil pressure 2,275 lb/in² (160 kp/cm²)
Pump capacity 6.6 Imp.gal/min (30 litres/min)

Tyres

Front 14.9/13-24/6
Rear 18.4/15-38/6

Dimensions and weight

Wheel base	112 in (2,840 mm)
Track, front	68 1/2 in (1,740 mm)
Track, rear	63/71 in (1,600/1,800 mm)
Turning radius	19 ft 8 in (6 metres)
Length	172 in (4,360 mm)
Width	90 in (2,280 mm)
Height with cab	102 in (2,600 mm)
Weight with hydr. lift, cab and front ballast weights	14,200 lb (6,440 kg)
Weight distribution front/rear	6,250/7,950 lb (2,840/3,600 kg)

Standard equipment includes:

Front-mounted ballast weights
One single-action and one double-action control valve for external hydraulic equipment
Extra hydraulic oil tank
Front mudguards
Telescopic lift links

Optional equipment includes:

External ballast weights at rear
Automatic hitch
Safety cab with heater
Lifting/towing hook
Remote-control hydraulic cylinder
Auxiliary cylinder increasing the lift of the hydraulic system to 6,170 lb (2,800 kp)
Hydraulic pump, 10 Imp.gal/min (45 litres/min)

Specifications are subject to change without prior notice.



BOLINDER-MUNKTELL

— a member of the Volvo Corporation
Eskilstuna, Sweden

Nr 1042/1 E